



CLME+ Project

Caribbean & North Brazil Shelf Large Marine Ecosystems

UNDP/GEF CLME+ PSCM3 Agenda Item 8



new UNDP/GEF "PROCARIBE+" Project (proposal/PIF stage)



BEFORE WE START: What is the GEF seeking to finance under GEF7?

(Programming Directions for the International Waters Focal Area (IW FA))

The GEF7 IW FA aims to catalyze **multi-state cooperation** to “**Strengthen Blue Economy Opportunities**”, by, i.a.:

- Developing **integrated ocean management arrangements (regional & national)**
- Developing initiatives to address land-based sources of **pollution, habitat degradation, unsustainable fisheries**
- Fostering **enhanced collaboration among LME’s, Regional Seas Conventions and Regional Fisheries Bodies**
- Catalyzing regional processes, such as the **Transboundary Diagnostic Analysis/Strategic Action Program (TDA/SAP)**

**the GEF IW’s global knowledge exchange platform*



Empowered lives.
Resilient nations.



www.theGEF.org



BEFORE WE START: What is the GEF seeking to finance under GEF7?

(Programming Directions for the International Waters Focal Area (IW FA))

Tools/priority actions highlighted in the GEF7 IW Programming Directions include:

- **Marine Spatial Planning**
- **Marine Protected Areas**
- development of **Blue Economy Strategies**
- **Habitat Restoration** efforts
- **actions against IUU**, market mechanisms to support **sustainable fisheries**
- **Source-to-Sea/Ridge-to-Reef** approach
- **private sector engagement**
- collaboration with **IW:LEARN***

**the GEF IW's global knowledge exchange platform*



PROJECT OBJECTIVE: Protecting, restoring and harnessing the natural coastal and marine capital of the region to catalyze investments in a climate-resilient, sustainable post-covid Blue Economy, through strengthened regional coordination and collaboration, and wide-ranging partnerships

**SNAPSHOT:
4 PROCARIBE+
Project Components**

C1. enhanced *regional* coordination and collaboration

C2. enhanced *national* capacity and enabling conditions

C3. key actions by all sectors of society in support of the **CLME+ Vision: a healthy marine environment supporting human well-being** (*focus on blue economy, MSP, MPA's, sustainable fisheries, micro- and innovative financing*)

C4. regional **Knowledge Management and Marine Data Infrastructure** + global LME community



Empowered lives.
Resilient nations.



www.theGEF.org



Project Components	Brief Description
<p>C1. enhanced <i>regional</i> coordination and collaboration</p>	<ul style="list-style-type: none"> • <i>Operationalize the Coordination Mechanism</i> • <i>Support a wide-ranging Partnership</i> • <i>Continue to support, and monitor the implementation of the 2015-2024 “CLME+ SAP” and associated action plans</i> • <i>Development of the new 2025-2034 multi-stakeholder SAP</i>
<p>C2. enhanced <i>national</i> capacity and enabling conditions</p>	<ul style="list-style-type: none"> • <i>National Inter-sectoral Committees (NICs), adequately connected to the regional CM, and supporting relevant national processes</i> • <i>National-level Blue Economy scoping + Marine Reporting (SOMEE) (min. 5 countries)</i> • <i>Training & Capacity Building (MSP, Source-to-Sea, Blue Carbon,...)</i> • <i>Support efforts to mainstream the marine environment in 2025 NDC’s (Blue Carbon,...)</i>



Empowered lives.
Resilient nations.



www.theGEF.org



Project Components

Brief Description

C3. key actions by *all sectors of society*

- *Blue Economy Plans + Marine Spatial Planning (MSP) (min. 8 countries)*
- *Marine Protected Areas (MPA's) and/or OECM's*
- *Traceability for key Fisheries Products*
- *Enhanced gear & practices in spiny lobster fisheries*
- *micro-financing for civil society and MSME's supporting actions that advance **implementation of the regional strategies**, action plans, ...(CLME+ SAP, "People Managing Oceans" civil society SAP, Regional Action Plans on Habitats, Pollution, Fisheries, ...)*
- *Innovative private financing mechanism*

C4. Regional Knowledge Management and Marine Data Infrastructure + global LME community

- ***PROCARIBE HUB** – Knowledge Management Platform of the PROCARIBE IGCM (supported by the Partnership)*
- *Building the region's **Marine Data Infrastructure***
- *Fully developed and updated **regional SOME**, informing the new SAP*
- ***Mandatory support to IW:LEARN** (global exchange among LME projects) + demonstrate regional leadership/pilot innovation*

Breakdown	GEF Grant allocation (in thousands of USD)
Component 1	1,911
Component 2	1,865
Component 3	9,450
Component 4	1,466
Project Management 5%	728
Project Preparation Grant	350

- USD 1 million from the PROCARIBE+ GEF grant will be dedicated to micro-finance/small grants supporting the CLME+ regional action programmes and plans; this amount will be matched by an **extra USD 1 million from the GEF Small Grants Programme** (this extra USD 1M is in addition to and thus not included in the values cited in the above table)

*number may increase in final PIF, subject to country interest and confirmation of final GEF grant size



The financing requested for the project is detailed in the table below.

Source of Funds	GEF Agency	Focal Area	Amount (in U\$)			
			Project Preparation	Project	Fee	Total
GEFTF	UNDP	International Waters	350,000	15,429,817	1,420,183	17,200,000
Total GEF Resources			350,000	15,429,817	1,420,183	17,200,000

*number may increase in final PIF, subject to country interest and confirmation of final GEF grant size



www.theGEF.org

TENTATIVE TIMELINE :

- From **CLME+ Project** to **“PROCARIBE+” Project**
- From **Interim Mechanism** to **PROCARIBE Inter-Governmental Coordination Mechanism**
- From **Interim Secretariat** to **long-term Secretariat**

	2021												2022												
	J	F	M	A	M	J	J	A	S	O	N	D	J	F	M	A	M	J	J	A	S	O	N	D	J
Proyecto CLME+ - Implementacion Tecnica	A	A	A	A	A	A															
Proyecto CLME+ - Cierre Administrativo							A	A	A	A															
Desarrollo Nota Conceptual (PIF) PROCARIBE+	A	A																							
PROCARIBE+ cartas de endoso PFO FMAM		A	A																						
PROCARIBE+ co-financiamiento indicativo		A	A																						
PROCARIBE+ PIF: a la Secretaria FMAM, Programa de Trabajo FMAM Junio 2020			D																						
PROCARIBE+ PIF: aprobacion por Consejo FMAM						M																			
PROCARIBE+: activacion de beca de preparacion de proyecto (PPG)						D																			
PROCARIBE+ PPG movilizada y operacional						M	M																		
<i>PROCARIBE+ fase PPG (12 meses maximo)</i>						A	A	A	A	A	A	A	A	A	A	A	A	A							
<i>PROCARIBE+ ProDoc: aprobacion interna PNUD</i>																									
<i>PROCARIBE+ ProDoc: envio a Secretaria FMAM</i>																									
<i>PROCARIBE+ ProDoc: aprobacion por CEO FMAM</i>																									
<i>PROCARIBE+: inicio proyecto</i>																									



Empowered lives.
Resilient nations.



www.theGEF.org



REQUIREMENTS:

- endorsement letters from GEF Operational Focal Points from participating countries
- preliminary indication of country/agency co-financing (*no formal co-financing commitment letter needed at this stage, only preliminary indication of amount*)

→ by when: PIF is to be submitted to the GEF Secretariat, with all GEF OFP letters and indicative co-fin, by **March 24**



Empowered lives.
Resilient nations.



www.theGEF.org



→ further improvements/fine-tuning of the proposal?

to be done in a participatory way, during the 12-months Project Preparation Phase, during which a GEF Project Preparation Grant (PPG) will be available to support such efforts



Empowered lives.
Resilient nations.



www.theGEF.org



ICM10 DECISION (February 2021)

ICM Members: IOCARIBE (IOC of UNESCO), UNEP CEP, FAO-WECAFC, CRFM, CCAD, OSPESCA, OECS Commission, CARICOM Secretariat

ICM WORK PROGRAMME Cluster 4: Continuity of the CLME+ Initiative

Agenda Item 8: ICM endorsement of, and further support for the new Project Concept

Considering the **need to give continuity to key SAP implementation processes** initiated and advanced through the **CLME+ and sister projects including but not limited to CROP and BE CLME+**, and taking into consideration the limited timeframe available to secure the successful submission of the new UNDP/GEF Project Concept to the June 2021 GEF Council Work Programme, the ICM:

- a. notes the **opportunity provided by the June 2021 GEF Council Work Programme**, as well as the fact that later GEF7 Work Programmes may no longer provide the same level of opportunities for leveraging similar amounts of financial support for advancing key SAP processes in the region,
- b. therefore acknowledges the **importance of meeting the March 24 deadline** for the submission of the UNDP/GEF PROCARIBE+ PIF, and expresses **formal support for efforts aimed at meeting that deadline**



ICM10 DECISION

(February 2021)

ICM WORK PROGRAMME Cluster 4: Continuity of the CLME+ Initiative

Agenda Item 8: ICM endorsement of, and further support for the new Project Concept

- c. agrees to liaise with respective Member States, in an **effort to ensure the submission of endorsement letters, from GEF Eligible countries, for the proposed PROCARIBE+ project, as soon as possible, but not later than 24 March 2021**
- d. commits to help mobilizing **country support leading to the timely provision of GEF OFP endorsement letters and indicative country co-financing** for the PIF as soon as possible, but no later than 24 March 2021
- e. agrees to communicate **indicative co-financing contributions** for the PROCARIBE+ PIF to the CLME+ PCU at their earliest convenience, but **no later than 28 February 2021**
- f. **requests its Chair to convey the above decisions and recommendations on behalf of the ICM to the CLME+ Project Steering Committee (PSC) at the forthcoming final PSC Meeting**



Empowered lives.
Resilient nations.



www.thegef.org



The financing requested for the project is detailed in the table below.

Source of Funds	GEF Agency	Focal Area	Amount (in U\$\$)			
			Project Preparation	Project	Fee	Total
GEFTF	UNDP	International Waters	350,000	15,429,817	1,420,183	17,200,000
Total GEF Resources			350,000	15,429,817	1,420,183	17,200,000

GEF REQUIREMENT: MIN 5:1 CO-FINANCING RATIO → USD 86 MILLION

*number may increase in final PIF, subject to country interest and confirmation of final GEF grant size



www.theGEF.org

PREPARATION OF INDICATIVE CO-FINANCING INFORMATION FOR INCLUSION IN THE PROCARIBE+ PIF

STATUS: EFFORT INITIATED, SOME PRELIMINARY PROGRESS, ACCELERATION OF EFFORT URGENTLY REQUIRED

The Netherlands	USD 17,270,00
OSPESCA	USD 1,600,000
OIRSA	USD 160,000
GWP CAPNET (S2S/IWRM)	USD 300,000
<u>TOTAL SO FAR:</u>	USD 19,330,000

progress-to-target: 22%



Empowered lives.
Resilient nations.



www.thegef.org



PROCARIBE+ CO-FINANCING

- **At PIF stage**
 - **indicative co-financing** = agreement that a number associated with your country/organization can be put preliminarily in the PIF, but no need to submit signed organizational co-financing commitment letter (yet)
- **At Project Document stage [by June 2022]:**
 - **signed co-financing commitment letters** to be submitted together with Project Document
 - original amount preliminarily indicated by organizations at PIF stage may still be (somewhat) revised
 - the project will have to submit letters for a cumulative amount at least equal to the indicative co-financing mentioned in the PIF



Empowered lives.
Resilient nations.



www.theGEF.org



PROCARIBE+ CO-FINANCING

BASELINE CO-FINANCING:

- **Activities & “Investments”** your country/organization will undertake/make in marine issues over the 2021/22 - 2027 period, **independent of whether there will be a PROCARIBE+ Project or not**
 - Marine issues include:
 - Those currently covered by the **10-year CLME+ SAP**
 - Those not currently listed under SAP, but conducive to achieving the **CLME+ Vision** (and possibly to be considered for the **2025-2034 SAP update**)
- Without these activities & investments, it would be much more difficult (and/or costly) for the project to achieve its objectives and outcomes/deliver its output (*they thus provide “the baseline” on which the project will build, and be essential for the project’s success*)
- At the same time, the Project’s **“incremental funding”** will help improving the outcomes of these activities/investments (*example: by facilitating inter-agency coordination > more sustainable outcomes*)



Empowered lives.
Resilient nations.



www.theGEF.org



PROCARIBE+ CO-FINANCING

activities/investments during what time span?

- **2021 and 2022 = PROCARIBE+ Project Preparation Phase**
 - Work conducted during this period that
 - helps with **PROCARIBE+ PIF** and/or **ProDoc** preparations
 - already **advances on the PROCARIBE+ Project Objective** and/or any of its **outputs**
- **(2022) 2023 - 2027 = PROCARIBE+ Project Implementation Phase**
 - *is a 2021 activity/investment CLME+ Project or PROCARIBE+ Project co-financing?*
 - **2 strategic considerations:**
 - if the activity/investment is unambiguously supporting a CLME+ Project output > CLME+
 - if room for interpretation > PROCARIBE+ (*but: see next slide*)
 - if clearly relatable to PROCARIBE+ Project preparations, objective or outputs > PROCARIBE+



Empowered lives.
Resilient nations.



www.thegef.org



PROCARIBE+ CO-FINANCING

- **“ALTERNATIVE SCENARIO” (THE PROJECT) CO-FINANCING:**
 - **Activities & “Investments”** by your country/organization that your country/organization might not have undertaken without the project, and that will directly contribute to:
 - The PROCARIBE+ **Project Objective**
 - and/or*
 - Any of the PROCARIBE+ **Project Outcomes and Outputs**

PLEASE NOTE: A SEPARATION IS TO BE MADE BETWEEN
(1) IN-KIND AND (2) CASH/GRANT CO-FINANCING



Empowered lives.
Resilient nations.



www.theGEF.org





Empowered lives.
Resilient nations.



www.theGEF.org



CLME+ Project

Caribbean & North Brazil Shelf Large Marine Ecosystems

UNDP/GEF CLME+ PSCM3 Agenda Item 8

Questions?




OCEAN-BASED ECONOMIES

What others have to say: Friends of Ocean Action -

“The Business Case for Marine Protection and Conservation”

This **World Economic Forum (WEF) IMPACT REPORT** proposes that, for marine protection to scale as urgently as is needed, the business case must be framed as part of a **comprehensive area-based management approach**: i.e., **Marine Spatial Plans (MSPs)** at a national or regional level. Protection needs to be designed and implemented in conjunction with the demands and needs of all other users of and stakeholders in Exclusive Economic Zones (EEZs). Strong protection across even a significant minority of total ocean area will still be an insufficient counter-weight if there is free-for-all extraction in the remaining waters. These **comprehensive ocean management plans** should **combine protection (through MPAs and OECMs)** with **managed mixed-use areas**, as well as **heavy industrial areas**, to **deliver** in the round: **sustainable conservation of biodiversity**; **economic security**; and the **well-being of local communities**

	Targeted MPA designations	Sector-specific opportunities	Comprehensive business cases/Marine Spatial Plans
What is it?	<ul style="list-style-type: none"> Protection of high priority, but more remote, areas of biodiversity Government-led with strong support from philanthropy 	<ul style="list-style-type: none"> Biodiversity 'win-wins' by partnering with heavy ocean-using industries Potentially OECMs (rather than MPAs) 	<ul style="list-style-type: none"> Ocean spatial mapping Area-based management Full Cost/Benefit/IRR analysis and scenarios
Opportunity	<ul style="list-style-type: none"> Typically large in scale Few competing stakeholders - option value/long-term security Single stakeholder (fisheries) 	<ul style="list-style-type: none"> Tap into coming (large) wave of ocean capital Secure <i>de facto</i> protection and conservation outcomes 	<ul style="list-style-type: none"> Long-term efficient use of capital and resources (public, private and local communities)
Risk	<ul style="list-style-type: none"> May not move the needle significantly in meeting ambitious global targets for protection 	<ul style="list-style-type: none"> No existing regulatory frameworks or calculus 	<ul style="list-style-type: none"> Complex, science-based plans (likely multi-year from design to implementation)
Business case complexity			

the 3-tiered approach proposed in the paper



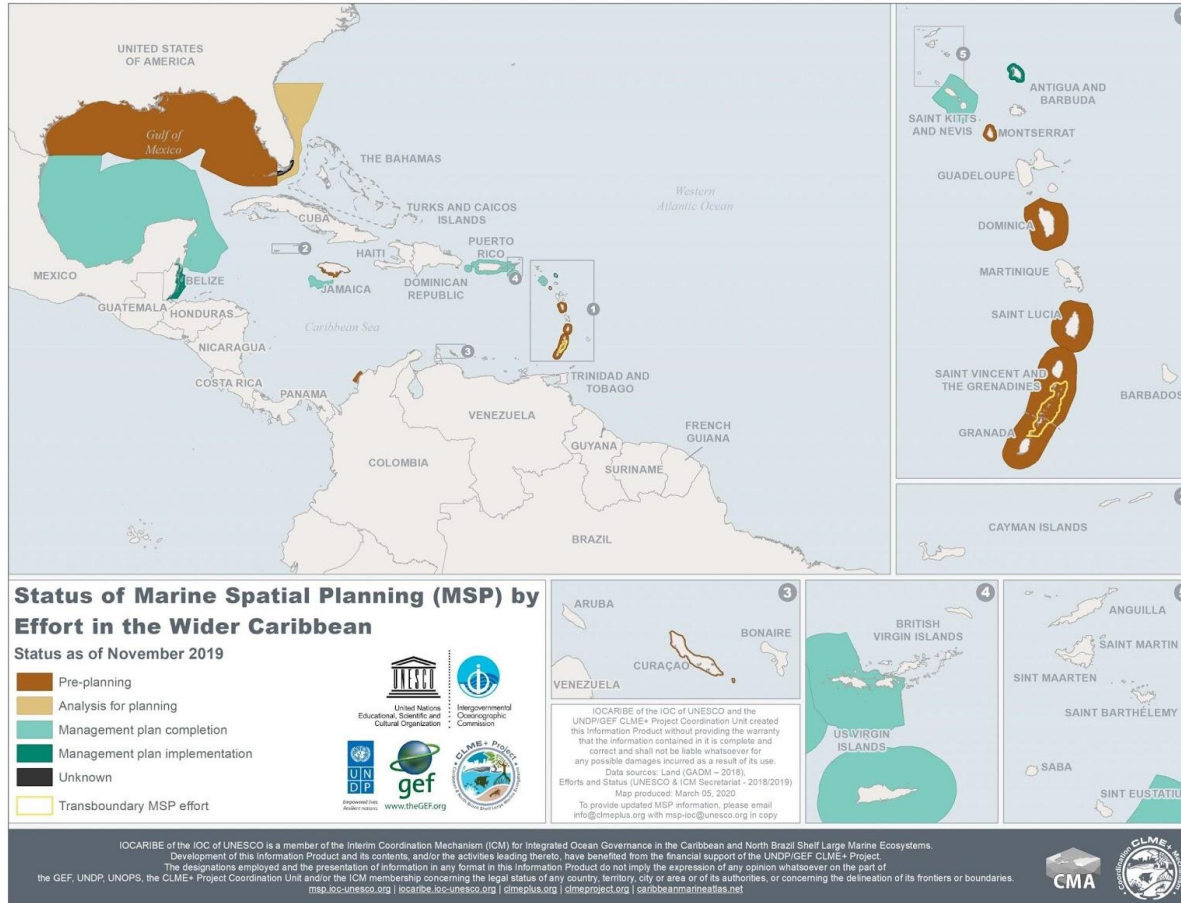
Empowered lives.
Resilient nations.



www.theGEF.org

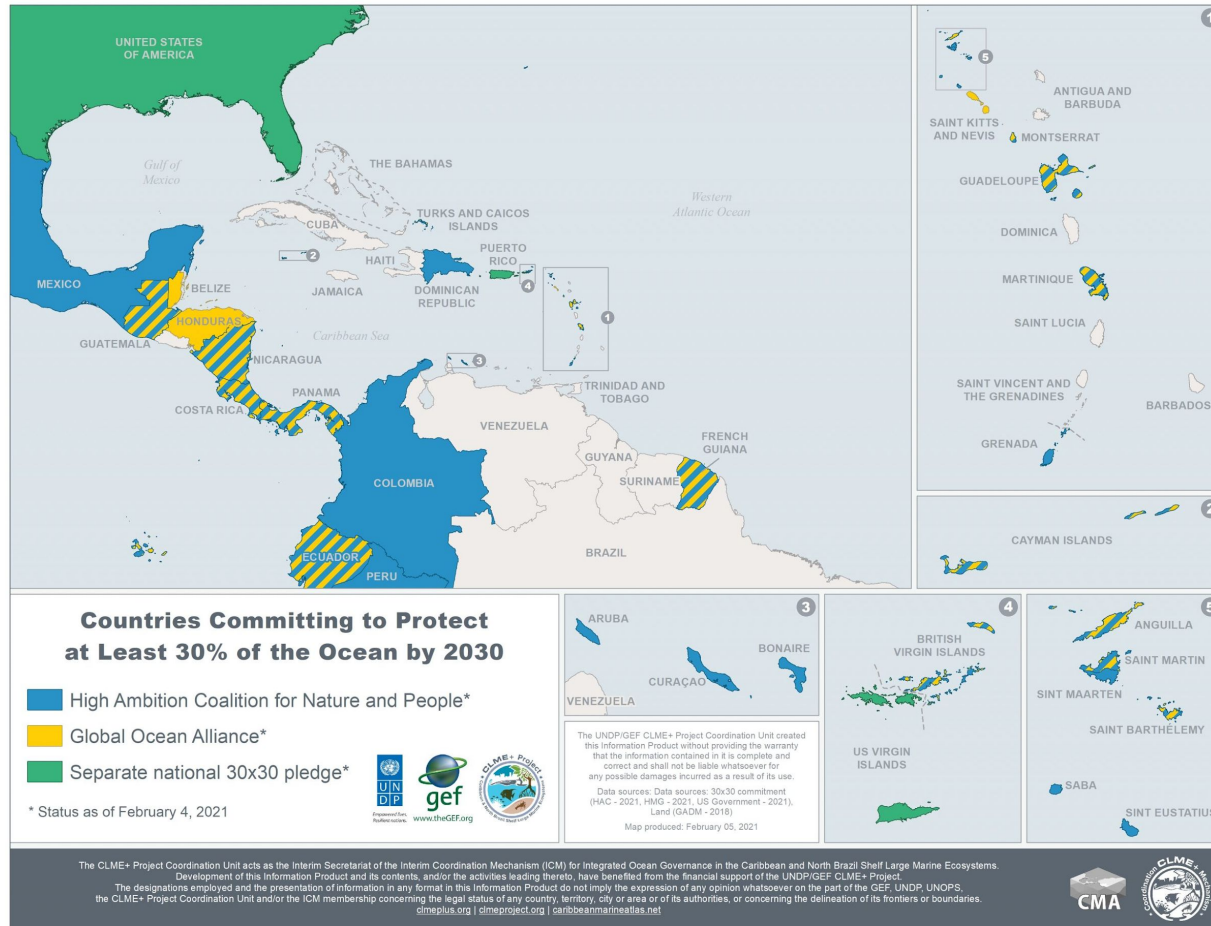


Some baseline information: MSP efforts in the region



Comment: MSP efforts are now also ongoing in Suriname and Guyana through an EU/WWF Project, and are expected to soon be initiated in the countries participating in the FAO/CAF/CRFM “BE CLME+” GEF Project

Some baseline information: “30x30” pledges....



Important note: we are aware that there may be an even more pressing need to enhance management/protection levels in existing MPA's. The new project can look into both options (to be further analyzed during the Project Preparation Phase)

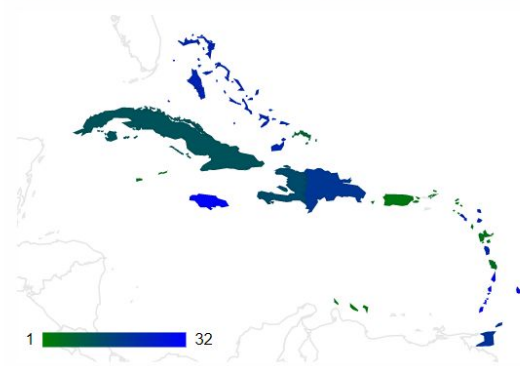
91
PROJECTS

6 Pipeline
41 Ongoing
44 Completed

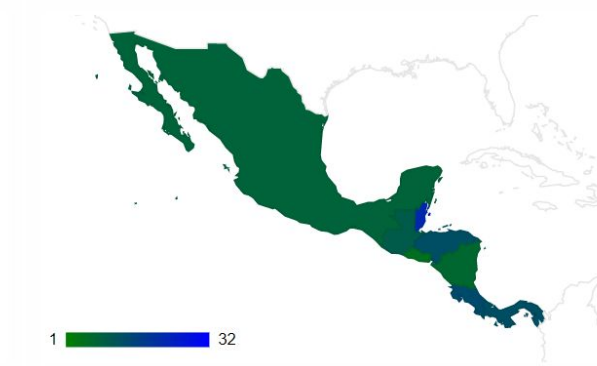
USD 410,655,933
TOTAL GRANT VALUE

86
COUNTRIES

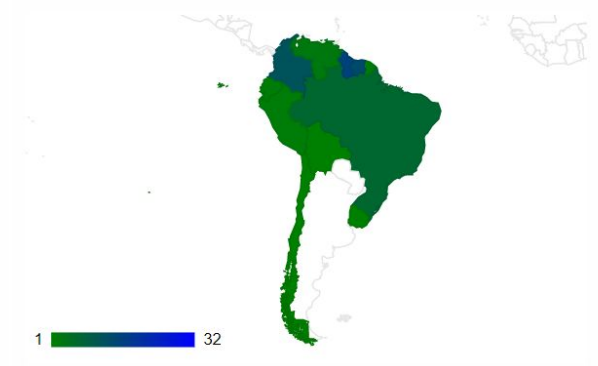
▶ Maps showing number of projects per country



Insular Caribbean




Central & North America




South America

Displaying 1-10 of 91 results

The  indicates that the Project Profile has been verified and it's being managed by the project's profile manager.

1 2 3 ... 10 >>

 Due the severe impact of COVID-19 worldwide, find out how projects are contributing to the recovery from this crisis in the CLME+region [here](#).

SEARCH

RESET

EXPORT



Empowered lives.
Resilient nations.



www.theGEF.org

